

## **HFN-S2 Installation Instructions - Passive Pickup For Selmer/Maccaferri Guitars**

To Install the **HFN-S2** you will need the following tools:

Drill, 3/16" 3/8" and 1/2" drill bits, fluted burr, x-acto knife or side cutters, needle nose pliers, metal shears

### **Installing the Endpin Jack**

Note: As can be seen in fig 1, the lower portion of the tailpiece has been modified on this Saga and the lower mounting screw of the tailpiece has been relocated upward. This was done so that the endpin jack could be mounted as close to center as possible. Whether you choose to modify the tailpiece or not is your choice. The only variation will be how centered the strap button appears.

- 1) Slack off all six strings and remove them or tape them out of the way. Remove any end pin at the butt of the guitar. If you are going to modify the tailpiece mounting, now is the time to trim the bottom of the tailpiece away, and redrill through the brass for the new hole.
- 2) Drill a pilot hole through the end block approximately 3/16" in diameter in the area you wish to place the end pin jack.
- 3) Using a fluted burr, chamfer the edges of the hole so that you will not damage the finish of the instrument when you use the larger sizes of bits required.
- 4) Drill through the guitar end block using a 3/8" bit and re-chamfer the hole. Repeat drilling with a 1/2" bit to complete the drilling operations.
- 5) Remove the outer strap button, and the small nut and washer from the endpin jack.

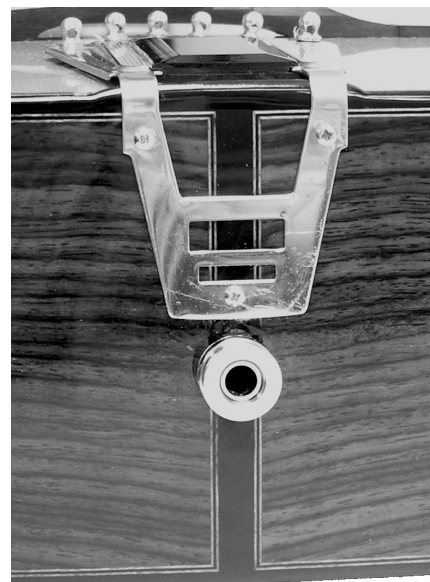


Fig 1

- 6a) **On Large Sound Hole Instruments** Reach inside the sound hole and poke the endpin jack through the hole in the end block
- 6b) **On Small Sound Hole Instruments** Uncoil and straighten the optional jack tool. Insert the brass end of the tool through the end of the guitar and feed it inside until you can grab the brass end of it from the sound hole. Insert the brass end into the endpin jack and pull the tool back through the body thus locating the jack.
- 7) The jack should protrude approximately 5/16" outside the guitar when tightened. Reinstall the flat washer and small nut. Insert a small allen wrench or other small round (like a drill bit) through the 2 holes in the end of the endpin jack to keep the jack assembly from rotating; tighten the small nut.

### **Installing the pickup**

Each arch on the bottom of the pickup base should center on one of the main transverse braces that frame the bridge box area. The pickup should be placed reasonably close to the center line of the instrument. (Fig 2)

### **Mounting Materials**

Each pickup comes supplied with a large quantity of light grey mounting putty.

- 1) Into each of the two arches on the bottom of the pickup that will mate up with the transverse bracing, tear off and insert a piece of putty large enough to completely fill each arch.

### **On Large sound hole instruments**

- 1) On large sound hole and 'D' hole instruments the opening for the sound hole is large enough that you should be able to comfortably install the pickup by simply putting your hand in through the sound hole.
- 2) When reaching inside to place the pickup, feel where the braces are and mate up the putty filled arches with the 2 braces. Press the pickup firmly into place..

### **On Small sound hole (petite bouche) Instruments**

- 1) Using the optional pickup installation tool. Note that the pivoting end of the tool has a small stop pin at its end. ( Fig 3)
- 2) Note that the side walls of the channel that will hold the pickup are slightly flexible and that they may be carefully bent inward to increase the tool's ability to hold the pickup in place.
- 3) Slide the pickup into place on the tool, as shown until the pickup rests against the locating pin. (fig 4)
- 4) Into each of the two small arches on the bottom of the pickup, tear off and insert a piece of putty large enough to completely fill each arch.



Fig 2

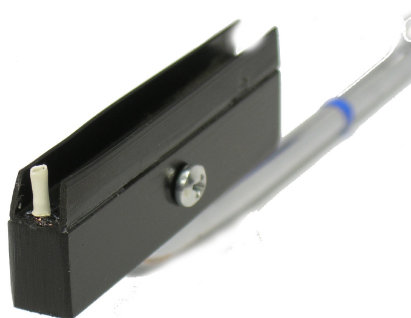


Fig 3

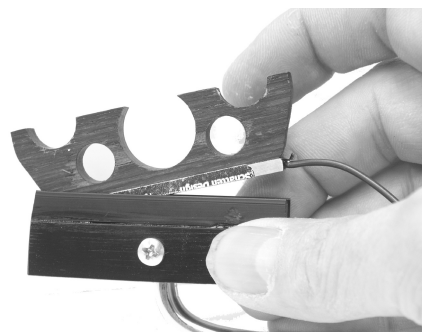


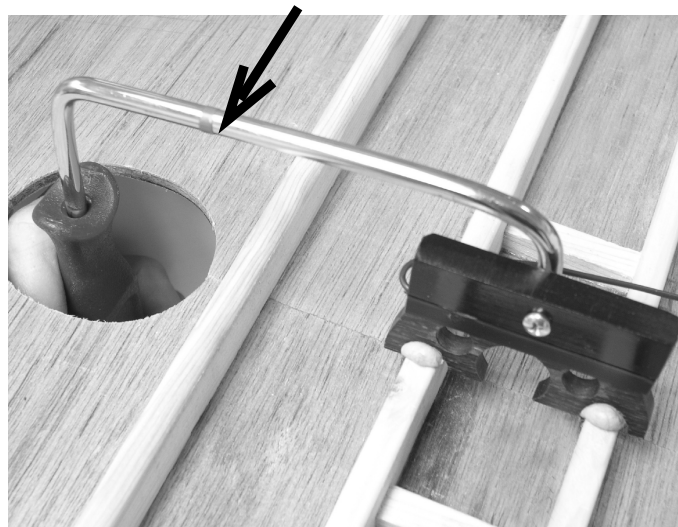
Fig 4

- 5) Note a marker band on the shaft of the tool (as shown by the arrow in fig 5). When this band is lined up with the edge of the sound hole, the pickup should be in exactly the right position over the braces for installation.(fig 5)
- 6) Being careful not to touch the bracing with the pickup or putty, insert the tool end holding the pickup through the sound hole just about a half inch farther than the shaft mark indicator line.
- 7) Raise the pickup into position and simultaneously pull the tool back slightly towards the shaft mark. You will feel the arches of the pickup start to grab the bracing. Place your thumb behind the handle (towards the fingerboard side of things) and use your thumb as a bit of a lever. This will make it easier to press the pickup into place. Continue to raise and pull back on the tool handle until the pickup is fully seated.
- 8) When the pickup is fully seated, press down and forward on the tool to allow the tool and the pickup to separate.
- 9) After installation, the majority of the mounting putty will appear to have squeezed out the side. This is normal. A word of caution here: do not try to use too little putty as the pickup may not mount properly.

#### **Finishing Touches**

If necessary, use a wire clamp to hold the pickup lead wires and prevent them from rattling around inside. Reinstall the strings.

**Note:** This pickup is designed for use with a preamp.



**Fig 5**



**Pickup Tool**

#### **Optional Tool Kit**



**Jack Tool**

The pickup tool is designed to allow you to quickly and accurately install our HFN-S2 series of pickups through the sound hole of a small sound hole instrument.

The jack tool is designed to be inserted from the outside of the instrument through the endblock and into the 1/4" hole in the endpin jack or preamp to allow it to be pulled into position.

#### **Warranty**

**We warrant to the original purchaser that our pickups are free from defects in materials and workmanship for a period of 2 (two) years. Should a product fail to perform properly within the specified warranty period you may contact your dealer or Schatten Design for instructions. No product will be accepted for warranty return by Schatten Design without a Return Authorization number.**